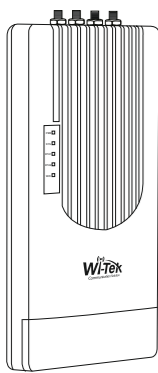


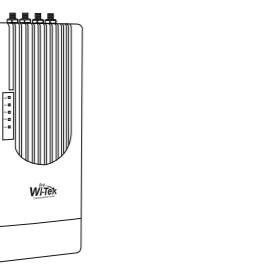
Quick Installation Guide

6GHz AX4800 Fixed Access Point



WI-FW5600

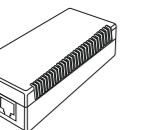
1. Packing Content



Radio x 1



Quick Installation Guide x 1



48V 2.5GE PoE Adapter x 1



Metal Strap x 2

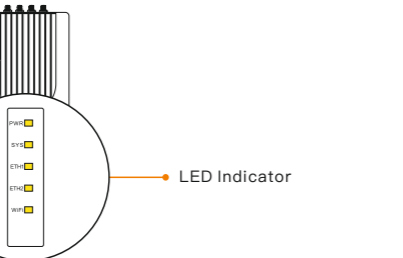


Power Cord x 1

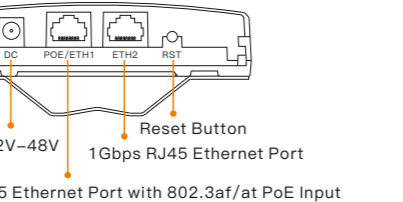
2. Appearance Overview

For WI-FW5600

• Front Panel



• Side Panel



• Button indicator

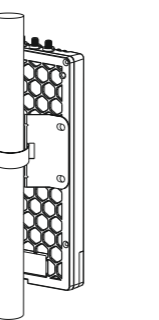
| Item | Description |
|--------------|--|
| Reset Button | Press and hold the "Reset" button for more than five seconds to restore the device to its factory settings mode. |

• LED Indicator

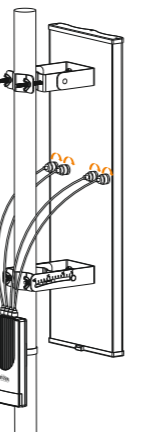
| Item | Status | Description |
|-------|----------|-----------------------------------|
| PWR | On | The device is powered on |
| PWR | Off | The device is powered off |
| SYS | On | The system is working normally |
| SYS | Off | The system is not working |
| WI-FI | On | The Wireless function is enabled |
| WI-FI | Off | The Wireless function is disabled |
| ETH1 | On | The port is connected |
| ETH1 | Blinking | Data being transferred |
| ETH2 | On | The port is connected |
| ETH2 | Blinking | Data being transferred |

3. Device Installation

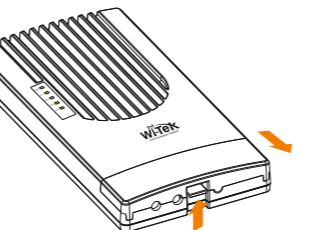
• 1. Mount the radio to a pole with provided Metal Strap.



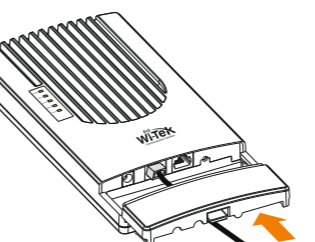
• 2. Connect the device to antenna with 4 RF cables.



• 3. Press the buckle and moving with the direction as the arrow shown.

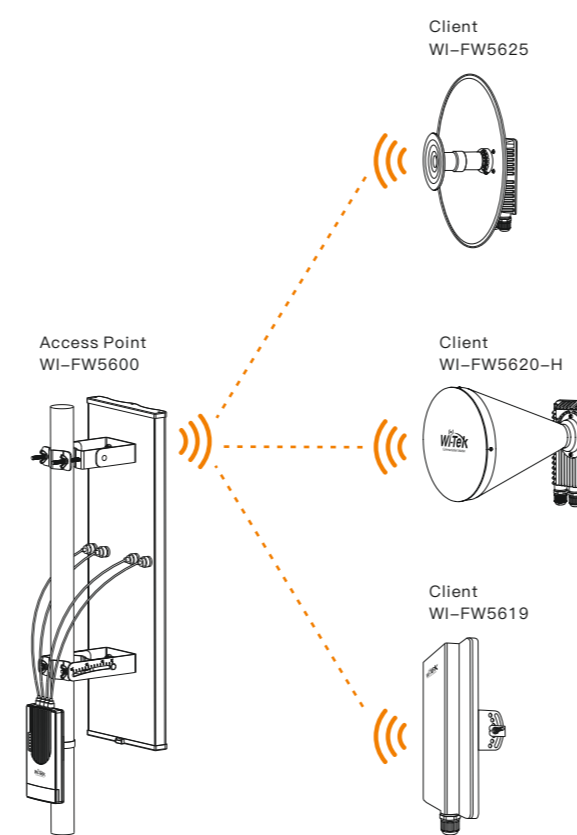


• 4. Using a cable connecting to the ETH port. Slide the cover back to the radio, with the cable passing through the hole.



4. Application

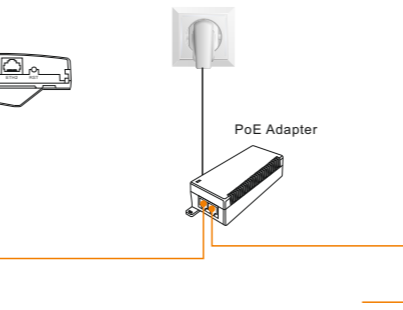
• PTMP



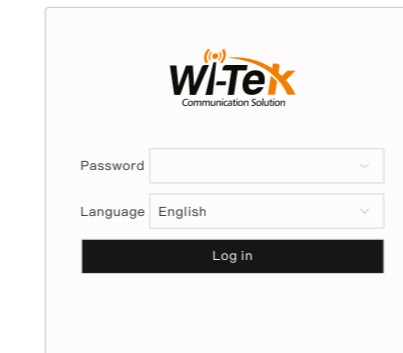
5. Web Management

• A) Boot Up Device

- (1) Power on the device.
- (2) Connect the PC to the PoE adapter using Ethernet cable

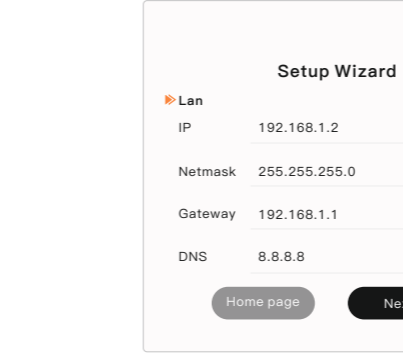


(3) Open a browser such as Chrome or Firefox and launch the login page with default IP 192.168.1.2, then type the password admin to enter the Management UI.

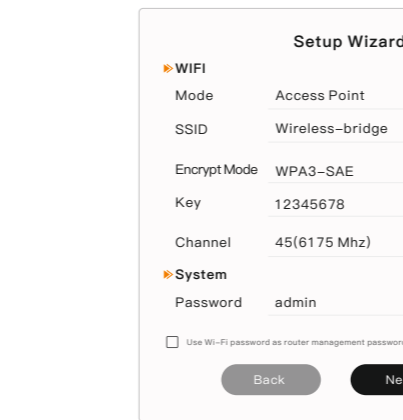


• B) Configure the Access Point

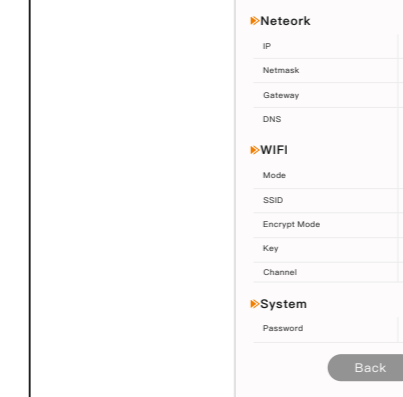
- (1) Please finish LAN Settings, and then click Next.



(2) Wireless Settings: Choose Access Point Mode and create a new SSID (Network name) for your wireless network. And then select Encryption Mode and create a PSK Key to protect the device.

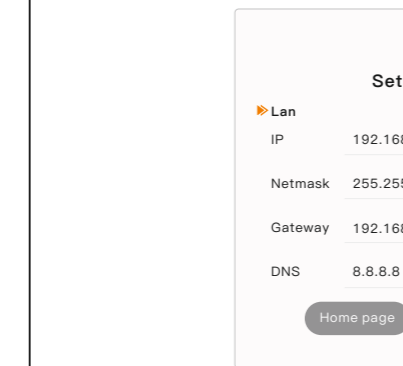


(3) Verify your settings and click Finish to complete the configuration.

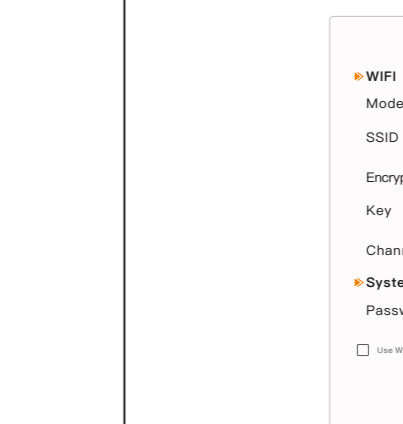


• C) Configure the Client

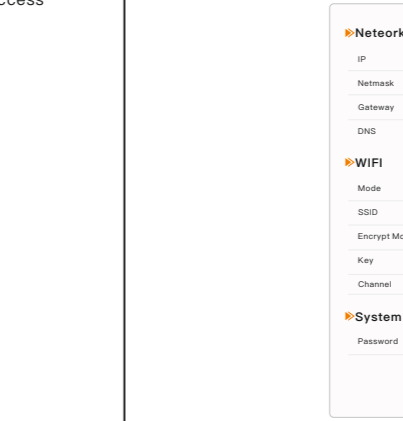
- (1) Make sure the clients are powered on and repeat step A) (2) and (3).
- (2) Please finish LAN Settings and make sure the subnet is the same as the Access Point, and then click Next.



(3) Wireless Settings: Choose Client Mode and enter the same SSID and PSK Key and select the same Encryption Mode as Access Point.



(4) Verify your settings and click Finish to complete the configuration.



Warranty Card

| | |
|-------------------|--|
| Username | |
| Address | |
| Telephone No. | |
| Purchase Shop | |
| Purchase Address | |
| Product Model No. | |
| Purchase Time | |
| Serial No. | |
| Dealer Signature | |

- If the product defects within the warranty period, we will provide professional maintenance service.
- Proof of purchase and a complete product serial number are required to receive any services guaranteed as part of the limited warranty.
- Any other defects that are not caused by workmanship or product quality, such as natural disasters, water damage, extreme thermal or environmental conditions, sticker damaged, warranty card loss will disqualify the product from limited warranty.



Wireless-Tek Technology Limited
 Address: Building 3, Units 1801-1807, 1812, Huaqiang Era Plaza, Tangwei Community, Fuhai Street, Bao'an District, Shenzhen City, Guangdong Province, China.
 Website: www.wireless-tek.com
 Tel: 86-0755-32811290
 Email: sales@wireless-tek.com
 Technical Support: tech@wireless-tek.com